

RENO HOME

INSPIRING AREA HOMES

ARROWCREEK OASIS

ART BLENDS WITH FORM
AND FUNCTION IN
SOUTH RENO

8

TIPS ON
SELECTING
GREAT ART

GARDEN DIARY
PLANT IN A SHADY SPOT





DESERT OASIS

ARROWCREEK HOME IS A TRANQUIL YET URBAN ESCAPE

WHILE TAKING IN THE SHAPES, textures, and creative elements of this dramatic ArrowCreek home, the casual visitor may recall some of the fundamental lessons learned in the formative years of high school.

Art plays a central role, as does geometry. Even the metaphors studied in English class evidently served as inspiration in this aesthetically complex, collaboratively designed home.

The home originally was built by West Haven Development Group, but many local consultants have played a role in its evolution from family home to desert oasis. Among them: interior designer Cheryl Chenault, exterior designer Jack Hawkins, and fine-art consultant Turkey Stremmel.

“We each worked collaboratively with the owners to create a sense of urbanity and sophistication through the elements of the interior design, art, and exterior architecture set against the rugged, desert landscaping of Nevada,” says Chenault, owner of Cheryl Chenault Interiors, Inc.

EXTERIOR INFLUENCES

Nevada’s natural landscape played a key role in the evolution of the home’s exterior design. Consultants report their overarching challenge: To create an exterior retreat that afforded space for relaxation and privacy, areas to gather and entertain, as well as child-friendly play places.

“The guiding design principle for the exterior space was to create a dramatic foreground equal to the spectacular view of Reno,” says Hawkins, owner of Hawkins & Associates, Inc.

But design considerations played understudy to the scene stealer: Nature.

“We used a rodent-resistant type of landscaping to deter natural critters in the area, as well as non-toxic plants,” Hawkins says, acknowledging the need to accommodate nature’s sometimes pesky influences. ➤

THE RIGHT ANGLES

Exterior designers borrowed angles and shapes from geometry to juxtapose against the fluid landscape of the desert beyond.



FORM AND FUNCTION

Interior elements tie in geometric shapes from the home's exterior. Chairs by Ironies (*inset*) offer an artistic complement with their engaging lines and prolific circles that contrast to other angular accents.

The pinnacle of the home's exterior is a steel sculptural water feature, which adds visual and acoustic focus to the landscape through its interior lighting and flowing water. The fabrication for this feature was provided by Tutto Ferro.

"The man-made geometry of the garden was purposefully created to be distinctly different from its surrounding natural landscape beyond," Hawkins says.

INSIDE...OUT

While the home's natural environment inspired much of the exterior design, that same focus was ushered through the home's front entrance.

"The interior reflects the beauty of our natural landscape with the elegant sophistication of contemporary living," Chenault says. "We wanted to create an elixir of urban furnishings and interior appointments blended with a palette of colors that inspire daily life, enhance family activities, and provide a supportive backdrop for art."

With her clients' needs in mind, Chenault sought to create several living areas that offered flexibility for entertaining large gatherings as well as effectively meeting the togetherness needs of intimate family time.

One of the primary focal areas: The great room. ➤



LET THERE BE LIGHT

A stunning Satori light sculpture is a focal point of the elegant dining room. The shade is made from artisan glass, architectural-grade steel, and Japanese hand-made silk-fiber parchment.



“USING ART AS A DESIGN ELEMENT
IS A WAY TO EXPRESS PERSONAL TASTE
AND REFLECT WHAT WE APPRECIATE AND ENJOY.”

— CHERYL CHENAULT

MASTERFUL DESIGN

The master retreat features modern furnishings and sweeping views through tall windows framed in sensual fabrics.

“An extraordinary feature of the home is the expansive amount of glass on all three walls of the great room, which frame a sweeping view of the city,” Chenault says. “The soaring windows create the sensation of an urban penthouse seated in the desert. Tall pillars of fabric bring cohesion as they soften the geometry of the room.”

Chenault chose a palette of neutral browns and taupe with accents of persimmon and clove throughout the living areas, with couture fabrics she says she selected for their “sensual texture and visual delight.”

“This attention to detail results in an elegance which supports the vibrant and colorful art that has been collected over time,” she says, including the dining room art above the fireplace by Marc Katano from Stremmel Gallery.

The dining room’s modern aesthetic is enhanced by the view through tall windows that overlook the interior courtyard and Hawkins’ steel sculpture.

More expansive windows framed by serene fabric drapery and inspiring artwork are found in the master retreat.

“Art is evocative,” Chenault says. “Using art as a design element, especially in the bedroom, is a way to express personal taste and reflect what we appreciate and enjoy.”



Designer Q&A:

CHERYL CHENAULT

CHERYL CHENAULT INTERIORS, INC.

1. Do you have a universal design mantra or philosophy?
Less is more. Explore the art of discernment.

2. What are a few of your favorite colors to accentuate a neutral color palette?
Persimmon, aqua, or white.

3. How can artwork serve to inspire?
Artwork is highly subjective and extremely personal. If you acquire art or objects that contain personal meaning, daily life experience will be enhanced.

4. Describe your process for getting to know a client so that you can best reflect his/her personality into design.
Practical experience and professional intuition play a key role along with a series of frank conversations about lifestyle, preferences, and expectations.

5. Tell us about the most rewarding part of your career?
During the past 15 years, I’ve been fortunate to work with some of the finest architects, builders, craftsmen, and clients in the area, resulting in a successful design practice and the opportunity to connect with others in a meaningful way.

6. Where do you shop for your own home?
My home is filled with pieces from my favorite places in the world, many of which hold various memories of life experiences: Reno, San Francisco, New York, Paris, Italy, Bali, and most recently, India.

Do you have a home to showcase in RENO Magazine?
Call 788-6556 or e-mail editor@renomagazine.com.



SHADE TREASURES

Shade gardens offer respite from the summer sun



MISTY NAGATA

THE DOG DAYS OF SUMMER ARE UPON US, and we're all searching for a place to keep cool. Some of us have a shady area under a tree that we just don't know what to do with. This shady spot might be just the perfect place in which to create a relaxing shade garden.

The first consideration is the kind of tree that's providing this shade. Fruit trees, oaks, and birches have fewer surface roots, so they're relatively easy to plant under. Silver, sugar, and Norway maples, along with elms, are

among the more challenging trees because of their surface roots.

That's not to say it can't be done.

If you have one of those trees whose roots just won't let you dig, there are many wonderful ground cover options including ajuga, vinca, violets, and sweet woodruff.

Sweet woodruff is one of my favorite plants. It spreads nicely and creates a carpet of tiny white blossoms with chartreuse foliage. Mix in Japanese painted fern and hosta — you'll be amazed at the

HEADER

Clockwise, Japanese Fern softly covers a shady patch of earth; Bleeding Heart is an appropriately named perennial; Violets offer color beneath trees with surface roots.



woodland garden you've created.

In the case of trees with deeper roots, there are a lot more choices. Among the many shade perennials I like are coral bells, astilbe, columbine, and bleeding heart.

Believe it or not, there actually is an evergreen that loves shade — hellebore. This perennial starts to bloom in winter and continues into early spring. It has pale green bell-shaped flowers. The foliage has jagged edges and looks very tropical. The hellebore will create early interest in your garden.

After the work of planting your shade garden is done, be sure to take the time to pull up a lounge chair and relax under your tree. It's the best venue to appreciate the beautiful oasis from the sun that you've created.

Misty Nagata is a four-season garden designer and owner of *Mistical Blossoms*. She can be reached at 691-6136. [@MN](#)

8 TIPS ON DESIGNING WITH

ART

ART, A SEA OF EXPLORATION, STRETCHING FROM A CHILD'S FINGER PAINTING TO FINE OILS AND SCULPTURE, SPEAKS IN DIFFERENT LANGUAGES. Harkening to individual perceptions, art evokes meaning, and possibility. "Art transcends and has the ability to restore and rebuild what the grind of daily life strips away," notes Turkey Stremmel, of Stremmel Gallery. Adding grace and elegance to one's surroundings, nourishing the soul, inspiring the imagination, and lifting spirits, art fills the place where passion exceeds words. In the process of turning your attention to art, keep these eight tips in mind:



↑ DEFINE A COLOR PALETTE

John Belingeri
The End of the Rope
Mixed media on paper, 32" by 24"

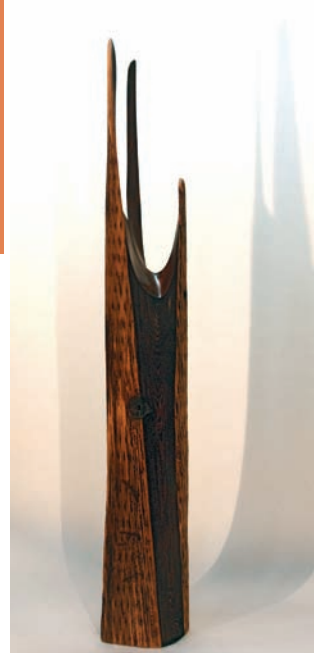
Color is a personal matter, limited only by the bounds of imagination. A colorful work of art defines a scheme and provides clues to well coordinated accent colors. ➤

RENO HOME

CREATE A PRESENCE →

Kenzi Shiokava
Primitive Totem VI
Wood, 91" by 11" by 9.5"

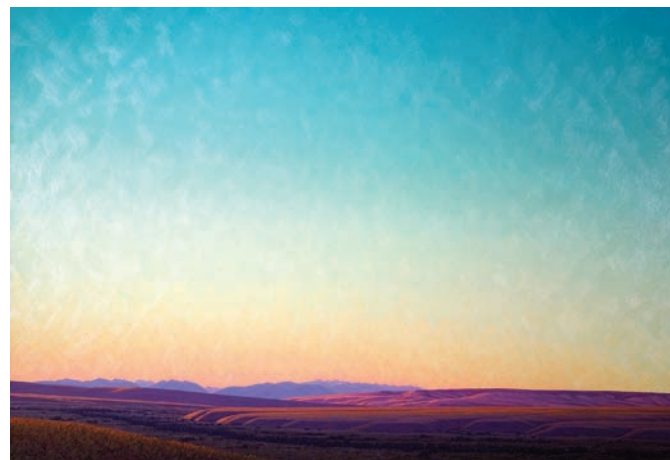
An unexpected element creates an air of wonder and intrigue. Tall, shapely forms draw the eye and add dimension to the room.



↑ EXPRESS YOURSELF

Sharon Maczko
Old Cowgirl
Watercolor on paper, 13.5" by 22"

The world is full of inspiration. Select art that says who you are and what you like.



↑ EXPAND A ROOM

Dale Livezey
Willow Creek Sunset
Oil on canvas, 36" by 48"

Strong horizontal lines create the illusion of increased length. This panoramic vista contains cool colors of aqua and violet, which recede and assist to alter the perception of space.



↑ ELICIT TIME FOR REFLECTION

Phyllis Shafer
Clouds Above Twin Lakes
Oil on canvas, 27" by 42"

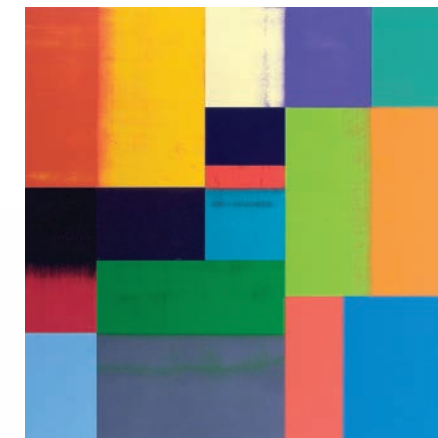
Art can calm the frenzy of a busy life. Feature a piece that invites repose and reflection.



↑ ESTABLISH A FOCAL POINT

Roger Berry
Zuni
Silicon bronze with blue patina
7" by 16" by 17"

Sculpture creates a center of interest and demands attention when sized appropriately for the room. Add a dedicated spot light for increased focus and drama.



↑ ADD ORDER & BALANCE

Charles Arnoldi
Hydromatic
Acrylic on canvas, 60.75" by 60.75"

Balanced forms bring order to a room. The visual weight of colorful geometric shapes creates a grounding effect.



↑ MAKE ART AN ADVENTURE

Len Chmiel
Vinales
Oil on canvas, 27" by 35"

Be open to art when you travel. While on the road you may find something you won't see anywhere else and you can bring the memory of that place back with you.

All featured artists are available through
Stremmel Gallery, 786-0558.

Cheryl Chenault is owner of Cheryl
Chenault Interiors, Inc. 